

# NETA INC.



## TURKIYE

ZUBEYDE HANIM MAHALLESİ  
No.48/85 ANKARA/TURKIYE  
T: +90 312 502 11 55  
M:+90 532 377 70 23

## KUWAIT

KUWAIT INTERNATIONAL AIRPORT  
TERMINAL II CONSTRUCTION SITE  
FARWANIYA / KUWAIT  
M: +965 922 01 587

[info@netacelik.com.tr](mailto:info@netacelik.com.tr)

# **NETA INC.**

## **SERVICES**

### **ENGINEERING:**

Mechanical Design

Auxiliary systems Design, Manufacturing and Erection

Civil / Structural / Architectural Design

Steel Structure Design / Manufacturing / Erection

Inspection and Testing

### **FIELDS of ACTIVITY:**

Industrial Plants

Chemical Plants

Power Plants

Dams and Hydroelectric Power Plants

Thermal Power Plants

Geothermal Power Plants

Wind Power Plants

Steel Structure Manufacturing and Erection

Pipe Lines

**NETA INC.**

**DAMS AND  
HYDROELECTRIC POWER  
PLANTS /  
HYDROMECHANICAL  
EQUIPMENT**

# NETA INC.



## ÇOBANLI REGULATOR AND HEPP

CLIENT:

YÜKSEL ENERJİ A.Ş.

INSTALLED CAPACITY:

3 UNITS TOTAL 20MW (2X8 + 1X4)

SCOPE:

EM MOUNTING  
SCADA / AUTOMATION,  
SWITCHGEAR DESIGN & APPLICATION  
TURBINE GENERATOR  
COMMISSIONING

# NETA INC.



## POSOF III REGULATOR AND HEPP

CLIENT: YENİGÜN ENERJİ A.Ş.

INSTALLED CAPACITY: 2 UNITS TOTAL 6,4MW

SCOPE: ERECTION OF ELECTROMECHANICAL EQUIPMENT,  
DESIGN AND ERECTION OF COMPRESSED AIR,  
COOLING WATER, HYDROLIC PIPING  
COMISIONING OF ELECTROMECHANICAL EQUIPMENT

# NETA INC.



## TUZTAŞI REGULATOR AND HEPP

CLIENT: KULAK İNŞAAT A.Ş.

INSTALLED CAPACITY: 2 UNITS TOTAL 1,6 MW

SCOPE: ERECTION OF ELECTROMECHANICAL EQUIPMENT,  
DESIGN AND ERECTION OF COMPRESSED AIR,  
COOLING WATER, HYDROLIC PIPING  
COMISIONING OF ELECTROMECHANICAL EQUIPMENT

# NETA INC.



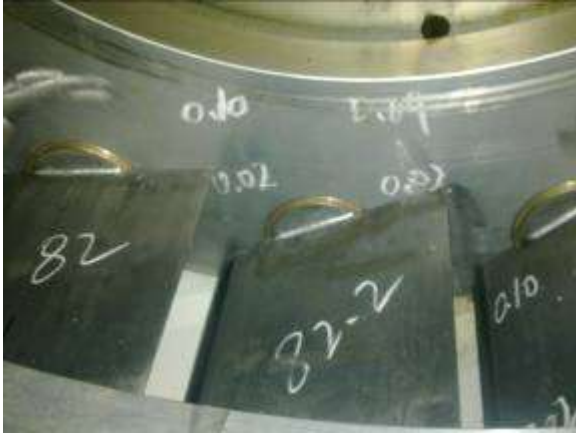
## MEREKLER REGULATOR AND HEPP

CLIENT: ESSENTIUM ENERJİ YATIRIMLARI A.Ş.

INSTALLED CAPACITY: 2 UNITS TOTAL 13,75 MW

SCOPE: ERECTION OF ELECTROMECHANICAL EQUIPMENT,  
DESIGN AND ERECTION OF COMPRESSED AIR,  
COOLING WATER, HYDROLIC PIPING  
COMISIONING OF ELECTROMECHANICAL EQUIPMENT

# NETA INC.



## YEŞİLIRMAK I REGULATOR AND HEPP

CLIENT:

ÜRÜNDÜL ENERJİ YATIRIMLARI A.Ş.

SCOPE:

INSPECTION AND TESTING THE ELECTROMECHANICAL EQUIPMENTS INCLUDING BUTTERFLY VALVES, TURBINE AND TURBINE PARTS, GENERATOR AND GENERATOR PARTS, GOVERNOR AND HYDRAULIC UNITS AT THE MANUFACTURERS SHOP AT CHINA



# NETA INC.



# NETA INC.



MERK REGULATOR AND HEPP

CLIENT:

SUKOM ENERJİ YATIRIMLARI A.Ş.

SCOPE:

INSPECTION AND TESTING THE ELECTROMECHANICAL EQUIPMENTS INCLUDING BUTTERFLY VALVES, TURBINE AND TURBINE PARTS, GENERATOR AND GENERATOR PARTS, GOVERNOR AND HYDRAULIC UNITS AT THE MANUFACTURERS SHOP AT CHINA