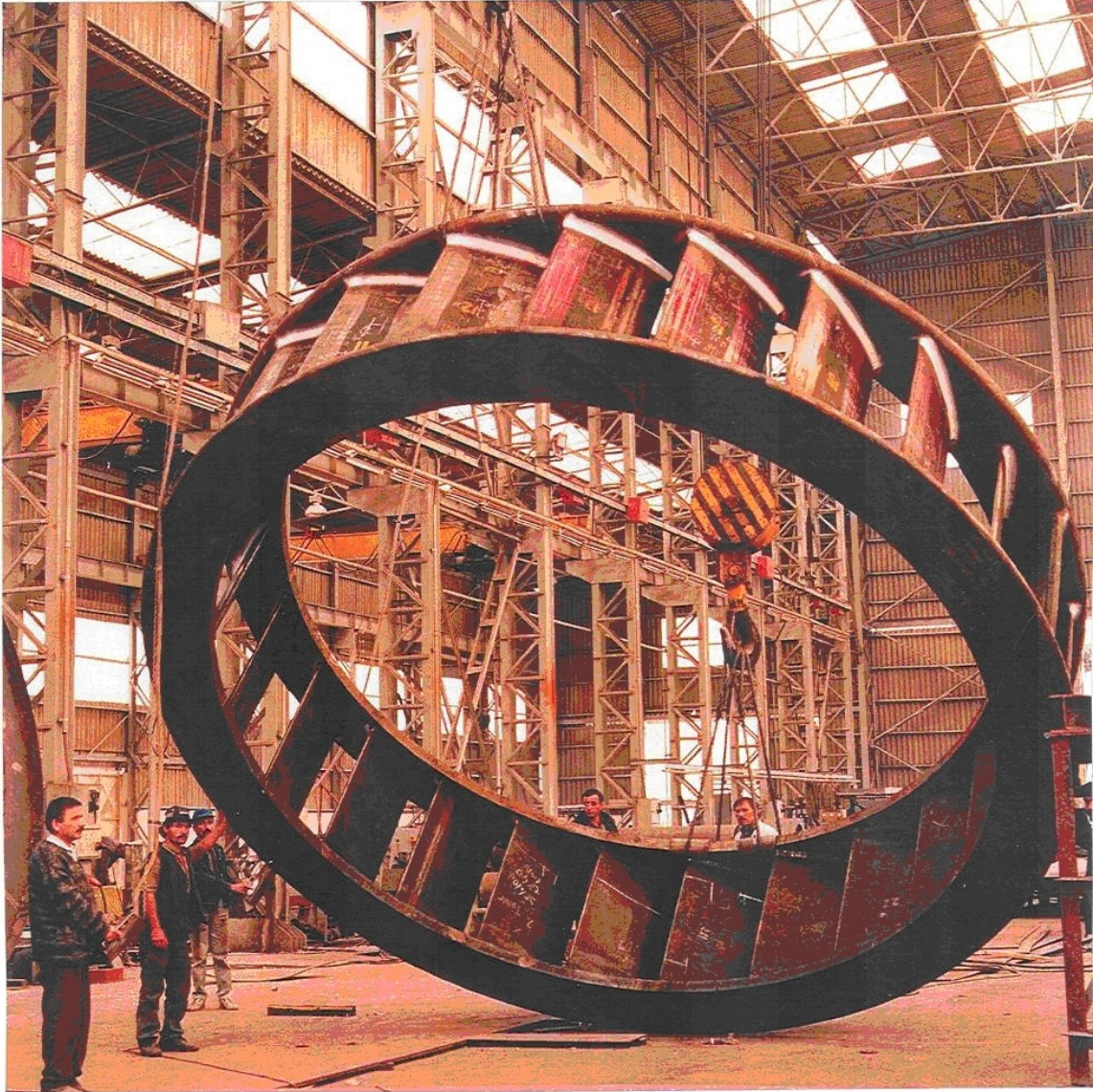


NETA INC.



TURKIYE

ZUBEYDE HANIM MAHALLESİ
No.48/85 ANKARA/TURKIYE
T: +90 312 502 11 55
M:+90 532 377 70 23

KUWAIT

KUWAIT INTERNATIONAL AIRPORT
TERMINAL II CONSTRUCTION SITE
FARWANIYA / KUWAIT
M: +965 922 01 587

info@netacelik.com.tr

NETA INC.

SERVICES

ENGINEERING:

Mechanical Design

Auxiliary systems Design, Manufacturing and Erection

Civil / Structural / Architectural Design

Steel Structure Design / Manufacturing / Erection

Inspection and Testing

FIELDS of ACTIVITY:

Industrial Plants

Chemical Plants

Power Plants

Dams and Hydroelectric Power Plants

Thermal Power Plants

Geothermal Power Plants

Wind Power Plants

Steel Structure Manufacturing and Erection

Pipe Lines

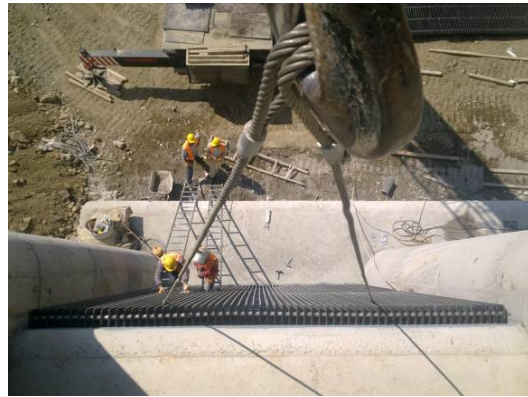
NETA INC.

**DAMS AND
HYDROELECTRIC
POWER PLANTS /
HYDROMECHANICAL
EQUIPMENT**

NETA INC.



NETA INC.



NETA INC.



KÖPRÜBAŞI DAM AND HEPP

CLIENT: YÜKSEL ENERJİ A.Ş. / YÜKSEL YAPI ELEMANLARI A.Ş.

SCOPE: DESIGN, MANUFACTURING AND ERECTION OF 800 TONS OF HYDROMECHANICAL EQUIPMENTS INCLUDING PENSTOCK, BRANCH, TRASHRACKS AND GATES

INSTALLED CAPACITY 2 X 38 MW

NETA INC.



ÇOBANLI REGULATOR AND HEPP

CLIENT:

YUKSEL ENERJI A.Ş. /
YUKSEL YAPI ELEMANLARI A.Ş..

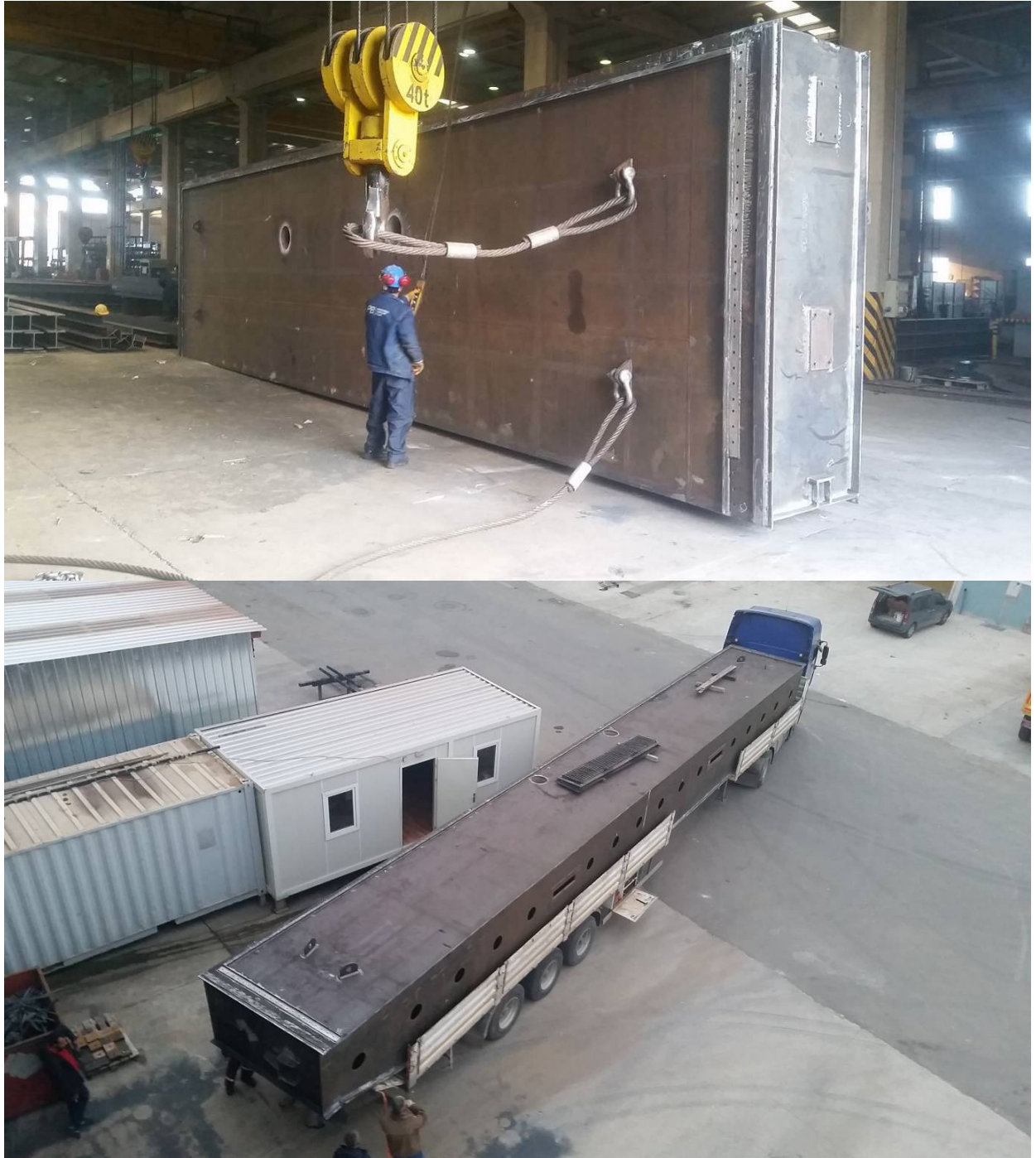
INSTALLED CAPACITY:

21 MW

SCOPE:

DESIGN, MANUFACTURING AND ERECTION OF
600 TONS OF HYDRO MECHANICAL
EQUIPMENTS INCLUDING PENSTOCK, BRANCH
(2 PIECES), TRASHRACKS AND GATES

NETA INC.



KHELVACHAURI AND KIRNATI HEPP's

CLIENT: SEVİNÇ A.Ş.

SCOPE: MANUFACTURING of 10PIECES (Total: 395 Tons, Heaviest 52Tons)
SPILLWAY STOPLOGS



SARAÇBENDİ REGULATOR AND HEPP

CLIENT:	AKFEN ENERJİ A.Ş.
INSTALLED CAPACITY:	25,68 MW
SCOPE:	REVISION OF EXTENSION JOINTS ON THE PENSTOCK

NETA INC.



NETA INC.



SERAP REGULATOR AND HEPP

CLIENT: BÜLBÜLOĞLU ÇELİK ENDÜSTRİSİ A.Ş.

INSTALLED CAPACITY: 30 MW

SCOPE: ERECTION OF 530 TONS OF PENSTOCK AND
500 TONS OF HYDROMECHANICAL
EQUIPMENT INCLUDING REGULATOR GATES,
RADIAL GATES AND TRASHRACKS,

NETA INC.



SENA REGULATOR AND HEPP

CLIENT: SEVİNÇ A.Ş.

INSTALLED CAPACITY: 30 MW

SCOPE: MANUFACTURING AND ERECTION OF 200 TONS 4000mm DIA. PENSTOCK AND ERECTION OF 620 TONS HYDROMECHANICAL EQUIPMENT INCLUDING REGULATOR GATES, RADIAL GATES AND TRASHRACKS,

NETA INC.



ÇARŞAMBA HES

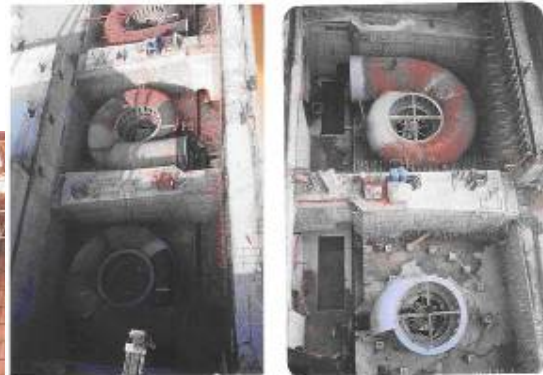
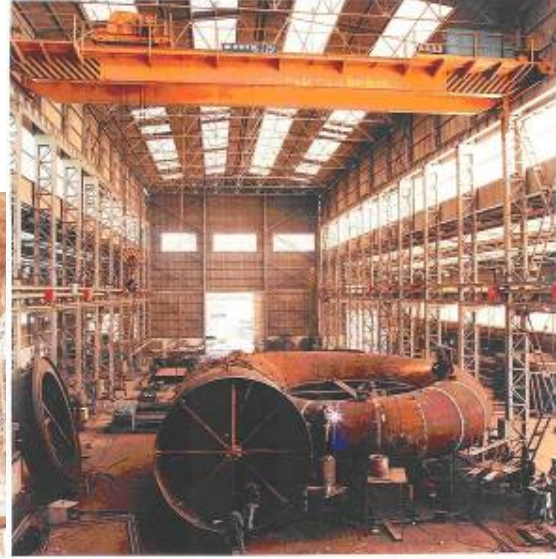
CLIENT:

BÜLBÜLOĞLU ÇELİK A.Ş.

SCOPE:

MANUFACTURING OF 435 TONS AND
ERECTION OF 650 TONS OF GATES,
TRASHRACKS AND LIFTING DEVICES

NETA INC.



ÇATALAN DAM AND HEPP

CLIENT:

IŞIK – NOELL

NETA INC.

SCOPE:

MANUFACTURING AND ERECTION OF SPIRAL CASE, STAYRING, DRAFT TUBES AND LIFTING BEAM



YUVACIK DAM

CLIENT:

GAMA A.Ş.

SCOPE:

ERECTION OF 1000TONS OF RADIAL GATES, HYDROLIC CONTROL UNITS, TRASHRACKS, PENSTOCK, IN TUNNEL STEEL LINING, EMERGENCY VALVE

NETA INC.



BERKE DAM AND HEPP

CLIENT:	YAPI VE TİCARET A.Ş.
INSTALLED CAPACITY:	510 MW
SCOPE:	DESIGN OF MANUFACTURING FACILITES AT SITE INCLUDING THE EQUIPMENTS, BUIŞDING THE MANUFACTURING TEAMS ORGANISATION OF DESIGN, MANUFACTURING AND ERECTION WORKS, TECHNICAL CONSULTANCY